

FAST HOT WATER DELIVERY OF YOUR DESIRED TEMPERATURE

RHEEM ECLIPSE®				
PRODUCT NAME	18kW 50°C WATER HEATER	18kW 60°C WATER HEATER	27kW 50°C WATER HEATER	27kW 60°C WATER HEATER
MODEL NUMBER	6C318500A	6C318600A	6C327500A	6C327600A
Electrical Connection	380 - 415V, AC 3 Phase 3 wire and earth, 50Hz			
Rated Power (kW)	18	18	27	27
Amps/phase	26	26	37.6	37.6
Maximum Flow Rate ²	7.4 – 7.7 L/min ¹		12 L/min	
Water Connection	G1/2 Elbow / R1/2 Straight			
Minimum Activation Flow Rate	2.8 L/min			
Minimum Water Supply Pressure	100 kPa			
Maximum Water Supply Pressure	750 kPa			
Pressure Drop at 7 L/min	115 kPa			
Pressure Drop at 12 L/min	280 kPa			
Minimum Water Resistivity	≥800Ω.cm			
Element Nos	3	3	4	4
Element Material	Ni80Cr20			
Temperature Control Range	30 – 55°C ³	30 – 60°C	30 – 55°C ³	30 – 60°C
IP Rating	IP25			

SIZING GUIDE – BASED ON LOCATION/CLIMATE⁴

Cold Water Temperature	Less than 15°C	15°C & Above
Recommended Products	All 27kW Water Heaters	All 18kW & 27kW Water Heaters
Recommended Model Numbers	6C327500A 6C327600A	6C318500A 6C318600A 6C327500A 6C327600A

To determine the flow rate capacity of the water heater to meet a given temperature rise at 415V power supply, apply the following formula:

$$\text{Flow rate (L/min)} = \frac{\text{kW Capacity} \times 14.3}{(\text{water heater set point} - \text{cold water temperature})}$$

Example:
27kW unit producing 50°C with 15°C cold water
Flow rate = $27 \times 14.3 / (50 - 15) = 11 \text{ L/min}$

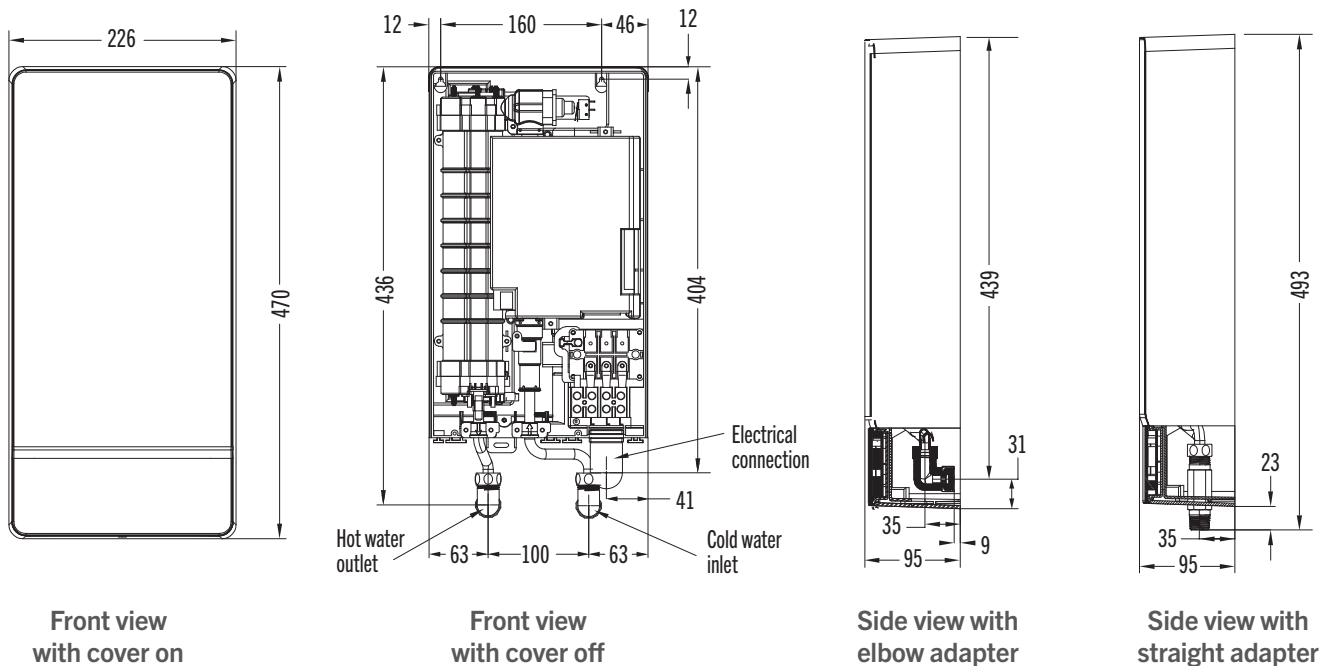
Note: this is the maximum flow rate passing through the water heater to meet the set point for the given cold water temperature. Total flow rate at fixtures depends on the fixture flow rates and mixed water temperatures.

¹ With Flow Regulator fitted at Dynamic Supply Pressure 500kPa

² At Dynamic Supply Pressure 500kPa

³ Temperatures above 50°C are trade adjustable to allow for heat losses in accordance with AS3498

⁴ Sizing recommendation based on incoming cold water supply with water heater producing set temperature for a 9 L/min shower set at 42°C with 415V ac power supply. Deviations in cold water temperature, set point, mixed water temperature, flow rate and voltage will alter the capacity of the unit to meet demand.



Front view with cover on

Front view with cover off

Side view with elbow adapter

Side view with straight adapter



Rheem Australia Pty Ltd

Head Office
1 Alan Street Rydalmere
NSW 2116 Australia

Postal
PO Box 7508 Silverwater
NSW 2128 Australia

Rheem Sales
call 132 552

Rheem Service
call 131 031

www.rheem.com.au

® Registered Trademark of Rheem Australia Pty Ltd
™ Trademark of SAI Global



Quality ISO 9001

* 5 year parts and labour warranty when used in a residential application.
1 year parts and labour warranty when used in a commercial application.
For full terms and conditions please contact Rheem or see Owner's Guide and installation instructions available at www.rheem.com.au/warranty

COMES ON STEADY, HOT AND STRONG